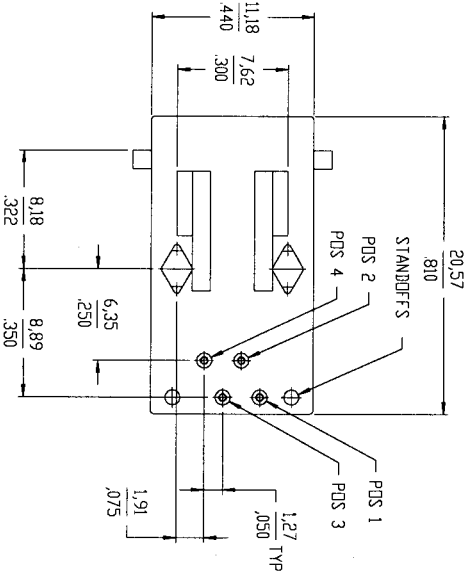
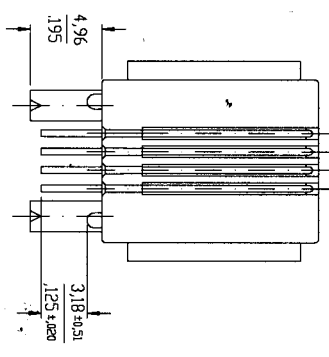
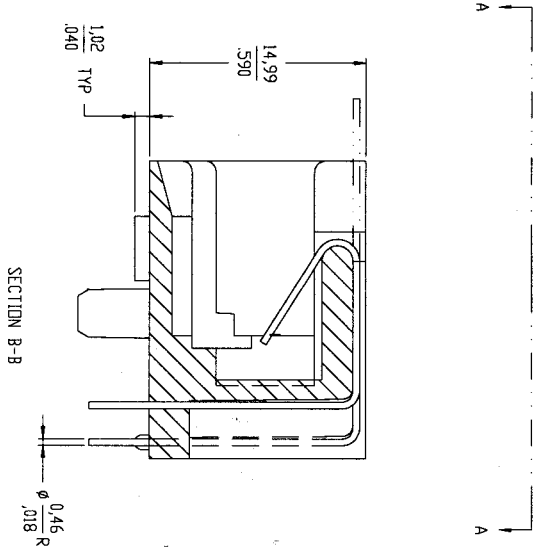
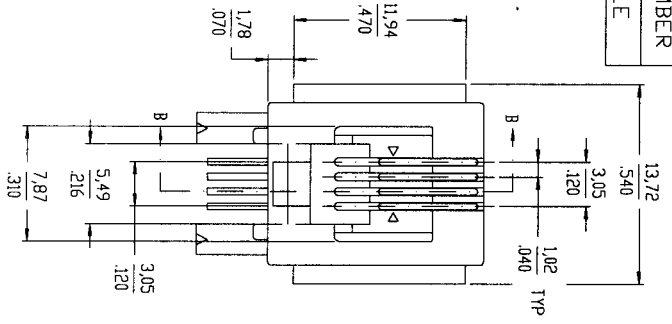




PRODUCT NUMBER
SEE TABLE



itr	ecm no	dr	date	tolerances unless otherwise specified	CUSTOMER COPY	FCI	www.fciconnect.com
F	T10160	FP	05/08/91	XX ±.01/XX.3	projection	4 POS HORIZONTAL	
G	S20252	EC	08/09/92	XXX ±.005/XX.13	MM/INCH	PC.B. MOD JACK ASSY	
H	S30240	EC	21/07/93	XXX ±.0020/XXX±.051	MM/INCH	product family MODJACK	
J	S80281	BL	12/18/98	0 ±.2	MM/INCH	size dwg no 68897	
K	S00022	BL	26/01/00		MM/INCH	code	
L	M05-0067	MHT	4/8/05		3/1	sheet	1 of 2
M	M05-0155	MHT	6/29/05		A	sheet	1 of 2

ACAD

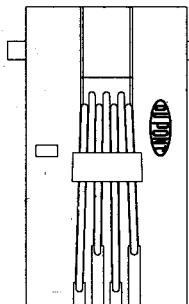
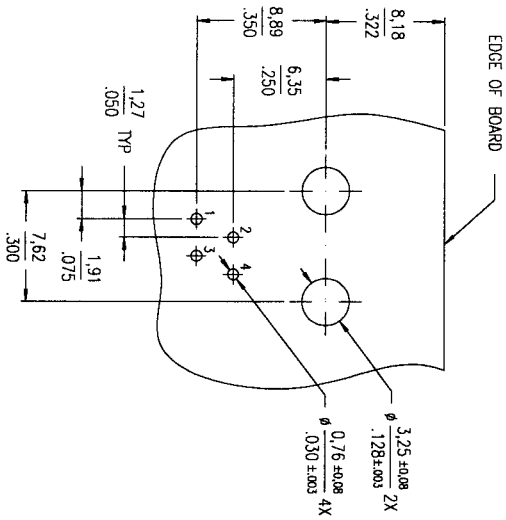
PDM: Rev:M

STATUS:Released

Printed: Mar 09, 2007

PRODUCT NO. NOTE 1,3	POSITIONS LOADED	CONTACT PLATING NOTE 6	HOUSING COLOR
68897-001	ALL	.76um / 30u" GXT	BLACK
-002	ALL	.76um / 30u" Au	BLACK
-003	ALL	.76um / 30u" GXT	OFF-WHITE
-004	ALL	1,27um / 50u" Au	BLACK
-005	ALL	.15um / 6u" Au	BLACK

RECOMMENDED BOARD LAYOUT
VIEWED FROM TOP



VIEW A-A

NOTES :

- 1 WHEN PRODUCT CALLS FOR PACKAGING IN TRAY ORDER THE PRODUCT WITH PART NUMBER 68897-XXXX FOR PACKAGING IDENTIFICATION. FOR PRODUCT NUMBER WITHOUT SUFFIX "T", THE PRODUCT WILL BE PACKED IN TUBE AS PER DUPONT STANDARD PACKAGING.
- 2 GXT IS 0,76um / 30u" MIN GXT WITH Au FLASH OVER 1,27um / 50u" MIN Ni.
- 3 ADD "L" SUFFIX AT THE END OF PART NUMBER FOR LEAD FREE OPTION.
- 4 THIS PRODUCT MEETS EUROPEAN UNION DIRECTIVES AN OTHER COUNTRY REGULATION AS DESCRIBED IN GS-22-008.
- 5 THE HOUSING TEMPERATURE WITHSTAND EXPOSURE TO 260°C PEAK TEMPERATURE FOR 15 SECONDS IN A WAVE SOLDER APPLICATION WITH A 1,5 MM MINIMUM THICK CIRCUIT BOARD. SEE APPLICATION NOTES/PROCEDURES IF THEY ARE AVAILABLE.
- 6 PLATING OPTION:
MAY BE EITHER GOLD OR GXT PLATED AT MANUFACTURER'S OPTION.

mat'l. code	lit	ech no	dr	date	tolerances unless otherwise specified	CUSTOMER COPY	FCI	title	product family	code
M					.XX ±.01/.X±.3 XXX ±.005/.XX±.13 XXXX ±.0020/.XXX±.051	projection	www.fciconnect.com	4 POS HORIZONTAL P.C.B. MOD JACK ASSY	MOD/JACK	
					angles 0° ±2'	MM/INCH				
					dr M.HERNANDEZ 4/8/05	scale				
					engr M.BARRIOS 4/8/05	size				
					chr M.BARRIOS 4/8/05	3/1				
					pprd M.BARRIOS 4/8/05	A				
sheet index	revision	sheet								sheet 2 of